



*BOĞART*



# *BOG'ART*



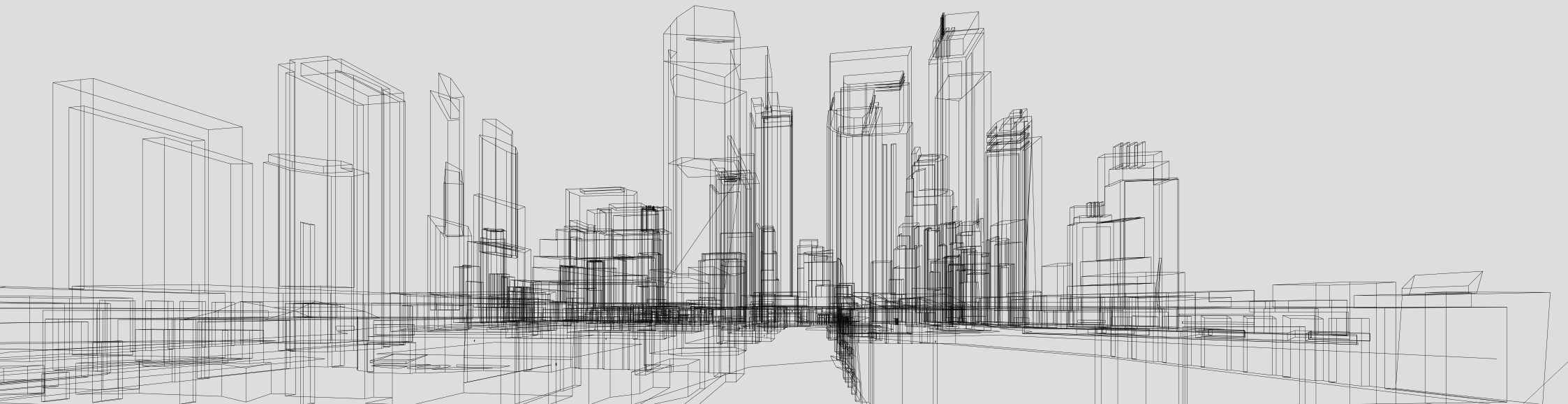
Bog'Art is an integrated building company based in Bucharest and is one of the largest general contractors in Romania.

The company is a family business established in 1991 and is a longstanding market leader in civil construction.

We are most reputable for landmark projects requiring complex and innovative technical solutions.

Our hands-on management and highly qualified staff promote a client-oriented culture that aims to optimize processes.

We achieve quality performance and timely completion of our projects through our full range of building services.



# KEY FIGURES

**+30** years of continuous activity and achievements

**+600** projects delivered in both private and public sectors

**2.5** million sqm delivered in a timely manner and to client satisfaction

**€1.5** billion contracted value in turnkey projects and innovative works

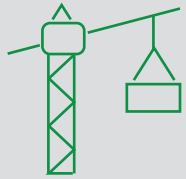
**€170** million turnover for Bog'Art Group in 2021

**300** office employees

**1,300** site staff spread throughout the country



## ACTIVITIES



Construction



Production



Real Estate  
Development



Building  
Management

## IN-HOUSE RESOURCES

- Longstanding experience, know-how and reputation;
- PMP awarded project managers;
- Experts in related fields, from consulting to design, tendering and execution;
- Production of materials and components in order to ensure turnkey delivery;
- Our own workforce.

## SERVICES

- General Contracting;
- Project Management & Consulting;
- Architecture & Design;
- Reinforcing Steel Production;
- Building Enclosures, Interior Finishes & Fit Outs;
- HVAC, Plumbing & Electrical Systems, BMS;
- Aluminum & Glass Façades.

## PROJECT TYPES

- Offices and residential buildings;
- Industrial buildings;
- Shopping centers and showrooms;
- Institutional and governmental buildings;
- Hospitality buildings and leisure facilities;
- Medical and scientific facilities;
- Cultural, educational and religious buildings and facilities.

# BOQ'ART

## GROUP OF COMPANIES



Building & Facility  
Management Services



Top producer  
of Reinforced steel



Residential Property Developer  
in central and northern Bucharest



Market leader in turnkey  
Façade systems



Consultancy in Construction  
and Project Management



Acquisition  
of Construction materials



# OUR VISION

## MISSION

- Romanian market leader for integrated building services;
- Commitment towards our clients and our buildings.

## STRATEGY

- Highest competency in general contracting through close coordination of services;
- Adaptability to any market context and flexible to any project scale.

## METHODS

- Implementation of new technology to improve working methods;
- Project-oriented structure with high responsiveness to client demands;
- Maintaining responsibility to sustainability throughout a building's lifecycle.

# CORE VALUES

We believe that the process is just as important as the result.

Our commitment to our project's success is applied in our working methods on the construction site and beyond.

The standards that guide our actions on a daily and long-term basis focus on delivering the highest level buildings.

Through hands-on management, we constantly aim to optimize our planning and execution, both from a time and a financial perspective.

Cutting edge technology and streamlined processes are always implemented to deliver state-of-the-art projects.

Through continuous organizational progress, we ensure our team's cohesion and growth opportunities for our employees.





Bog'Art represents a culture of building. In order to successfully deliver a turn-key project, our group of companies are equipped and organized to the scale of a large corporation, but carry the personal touch of a family business. The fully integrated building services we provide are client-oriented, with a strong focus on applied ingenuity and responsiveness to each project`s needs.

The company has evolved throughout several business cycles for 30 years, achieving continuous growth and adaptability by working successfully with international property investors in Romania. The long-standing local relationships, accumulated know-how, and devoted professionals in our team reflect our expectations of higher building standards. That is our premise for building Bog'Art and the promise we keep towards Bog'Art buildings.

President and Owner of Bog'Art,  
eng. RAUL DOICESCU

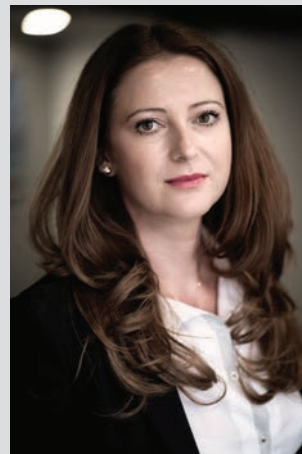


Chief Executive  
Officer



Sorin Greu

Chief Financial  
Officer



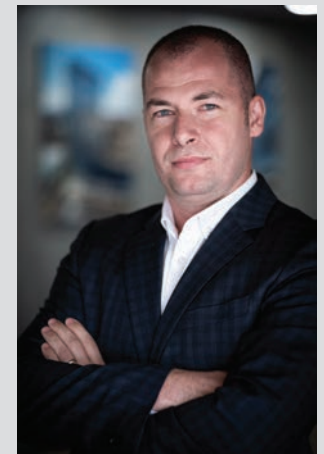
Greta Guțoi

Operations  
Director



Bogdan Boldescu

Tendering  
Director



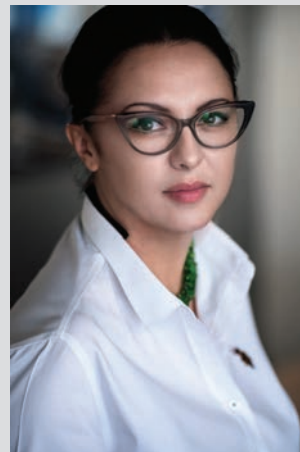
Adrian Tudor

Procurement  
Director



Sorin Suci

HR  
Director



Simona Cârstoiu

Production & Workforce  
Director



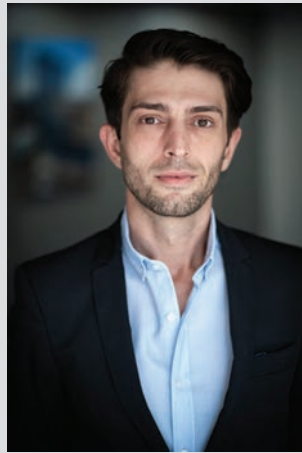
Ion Bădiceanu

Development  
Director



Bogdan Doicescu

Design  
Director



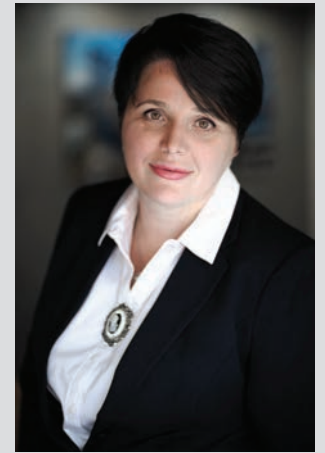
Alexandru Popa

Quality Control  
Director



Vlad Roman

Head  
of Legal



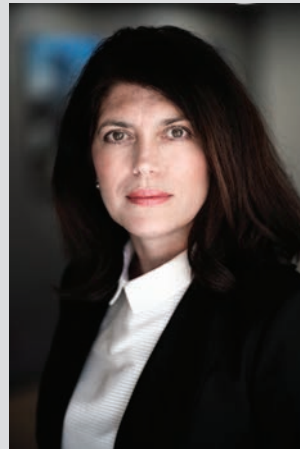
Mariana Broșteanu

Head  
of Controlling



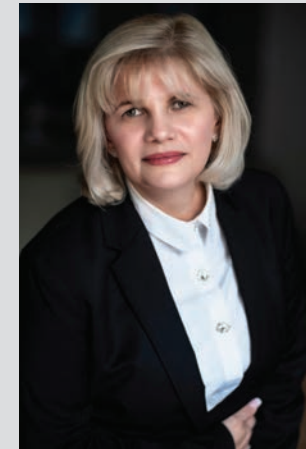
Cristina Botez

Head  
of Accounting



Maria Chira

Head  
of Installations



Claudia Antohe

# ACHIEVEMENTS

**Cumulatively delivered 1M sqm landmark Class A Offices since 2015.**

**1 in 3 modern office buildings in Bucharest is built by Bog'Art.**

**“Construction Company of the Year”**

Construction & Investment Journal - 8 consecutive years 2013 - 2020

**“Hall of Fame Best of the Best Constructor for Central & Eastern Europe”**

Construction & Investment Journal - 2 consecutive year 2017 & 2018

**“Professional Service Provider of the Year”**

SEE Property Awards - 4 consecutive years 2018 & 2021

**“Shortlisted Construction Company of the Year”**

CEEQA by Financial Times 2015 – 2019

**Best Office Buildings Winner**

Forbes - 4 consecutive years 2018 - 2021

**Nominated and awarded for quality construction**

ARACO - Romanian Building Association - yearly



# OUR PORTFOLIO OF CLIENTS



SPEEDWELL

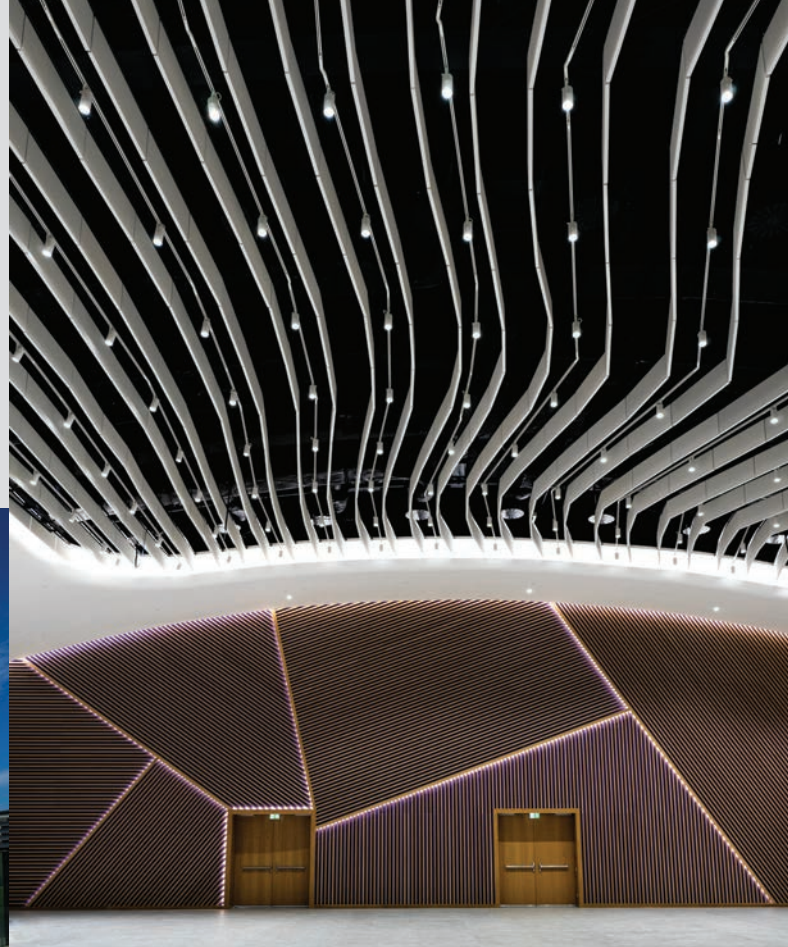


A photograph of a modern office building facade with a dark, metallic finish and large glass windows. A white wireframe overlay of a building structure is visible on the left side. The text "OFFICE BUILDINGS" is prominently displayed in the upper left quadrant.

# OFFICE BUILDINGS



# GLOBALWORTH CAMPUS (3 BUILDINGS & AUDITORIUM)

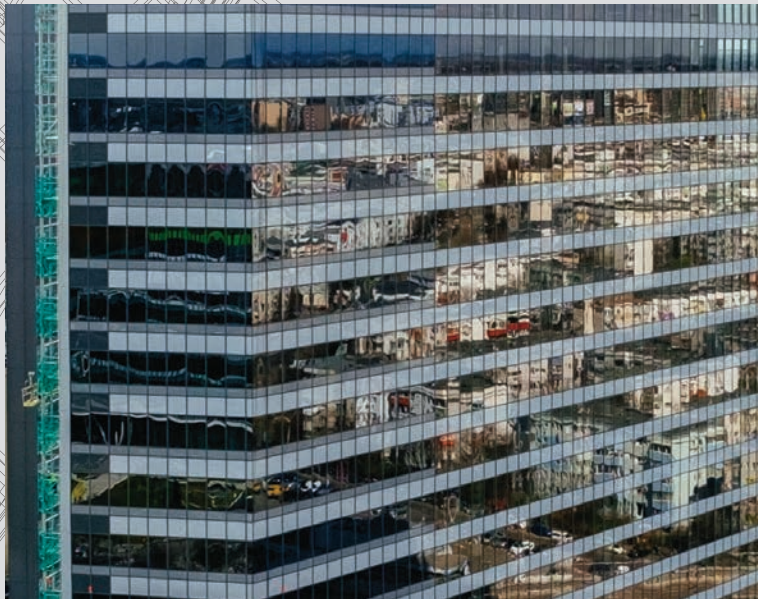


**LOCATION** 1-9 Dimitrie Pompeiu street, district 2, Bucharest  
**SURFACE** 142,000 sqm  
**EXECUTION** 2015-2020  
**DURATION** 55 months





# GLOBALWORTH TOWER



**LOCATION** 201 Barbu Văcărescu street, district 2, Bucharest  
**SURFACE** 69,000 sqm  
**EXECUTION** 2014-2016  
**DURATION** 20 months



**LEED Platinum** (the first building in Romania and the broader SEE region to have received this accreditation)  
**HOF Awards 2018:** Leading Green Building at CIJ Hall of Fame  
**LEED** The second tallest building in Bucharest (118m height)

# THE BRIDGE

(3 PHASES)



**LOCATION** 23 Orhideelor street, district 6, Bucharest  
**SURFACE** 120,900 sqm  
**EXECUTION** 2016-2020  
**DURATION** 60 months



**LEED Platinum** (with the highest score earned in Romania to date)  
**HOF Awards 2018:** best office lease

**SEE Real Estate Awards:** Concept & Design Project of the Year 2016  
**Building 1** is the first precast multileveled office building in Romania

# EXPO BUSINESS PARK



**LOCATION** 68 Clăbucet street, district 1, Bucharest  
**SURFACE** 70,600 sqm  
**EXECUTION** 2017-2019  
**DURATION** 22 months



# RENAULT BUCHAREST CONNECTED



**LOCATION** 3G Preciziei street, district 6, Bucharest  
**SURFACE** 59,500 sqm  
**EXECUTION** 2017-2019  
**DURATION** 18 months





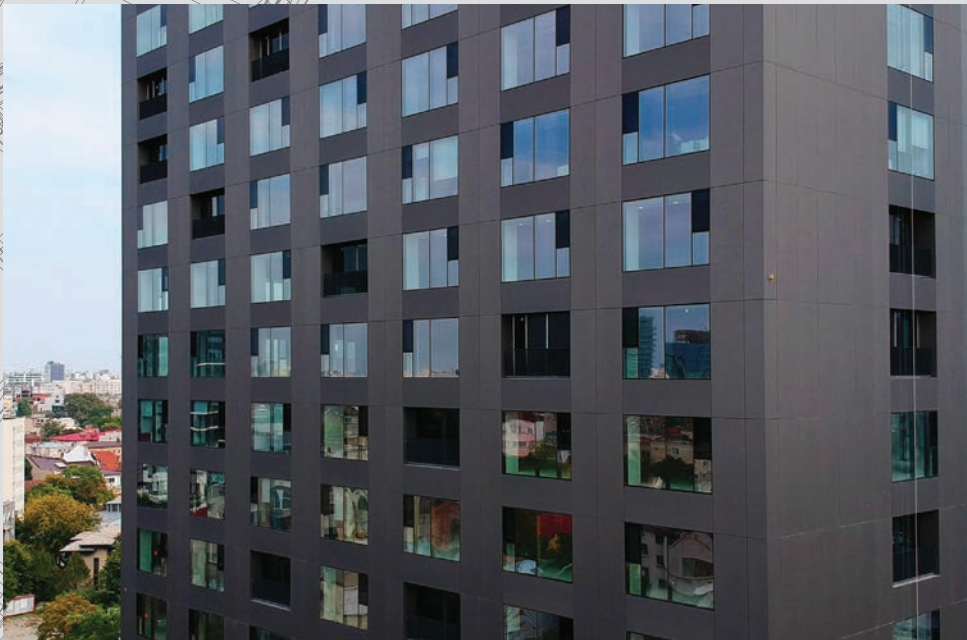
# TIMPURI NOI SQUARE (PHASE 2B)



**LOCATION** 165 Splaiul Unirii, district 3, Bucharest  
**SURFACE** 40,000 sqm  
**EXECUTION** 2017-2019  
**DURATION** 24 months



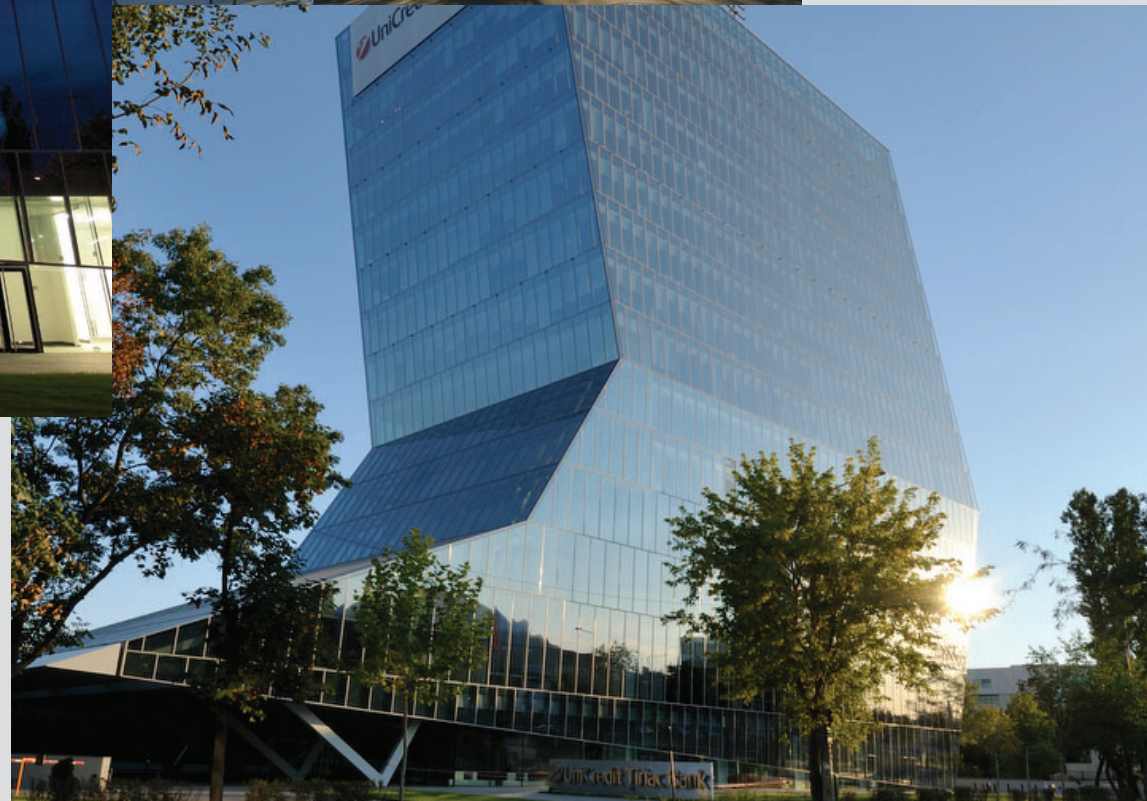
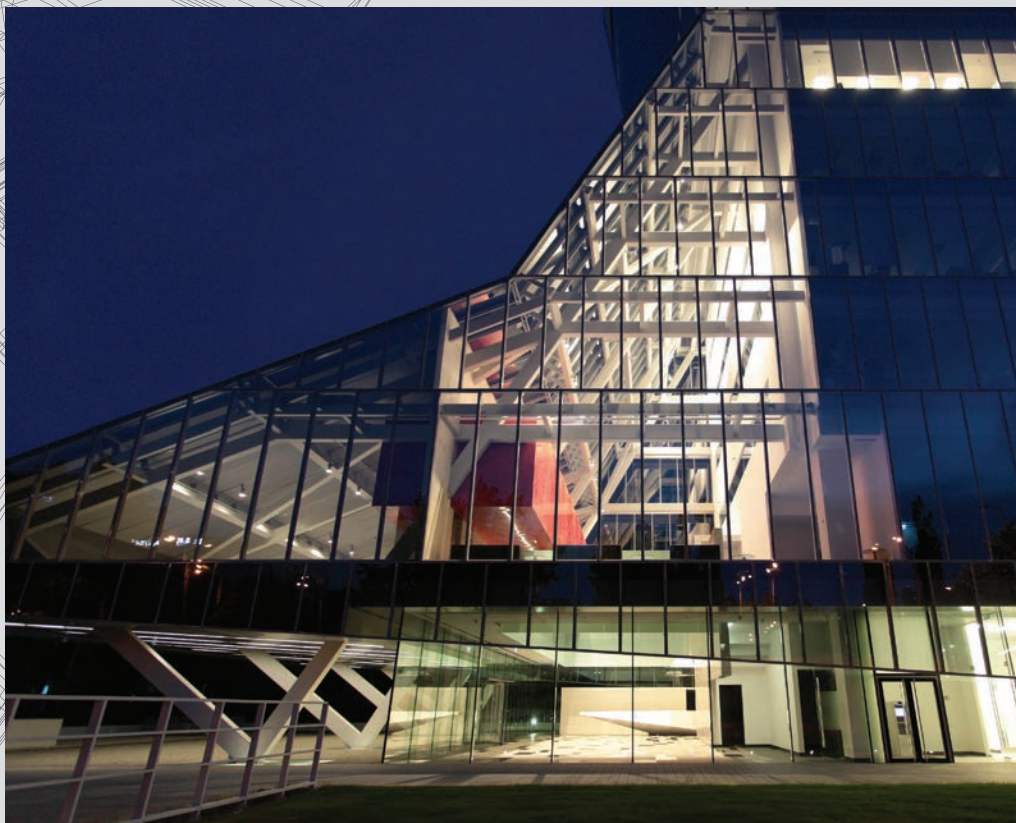
# UNIRII VIEW



**LOCATION** 6-8 Corneliu Coposu blvd., district 3, Bucharest  
**SURFACE** 26,000 sqm  
**EXECUTION** 2016-2018  
**DURATION** 21 months



# UNICREDIT HQ



**LOCATION** 1F Expoziției blvd., district 1, Bucharest  
**SURFACE** 24,620 sqm  
**EXECUTION** 2011-2012  
**DURATION** 16 months



**BREEAM Very Good** (first in Romania) Central & Eastern European Real Estate **Quality Awards (CEEQA)** in Warsaw nominated this project as one of the best office developments of the Year in 2012

**ARACO 2013 Quality Trophy**  
**The Special shape** of the building required the installation of four seismic dampers

# E-ON HQ



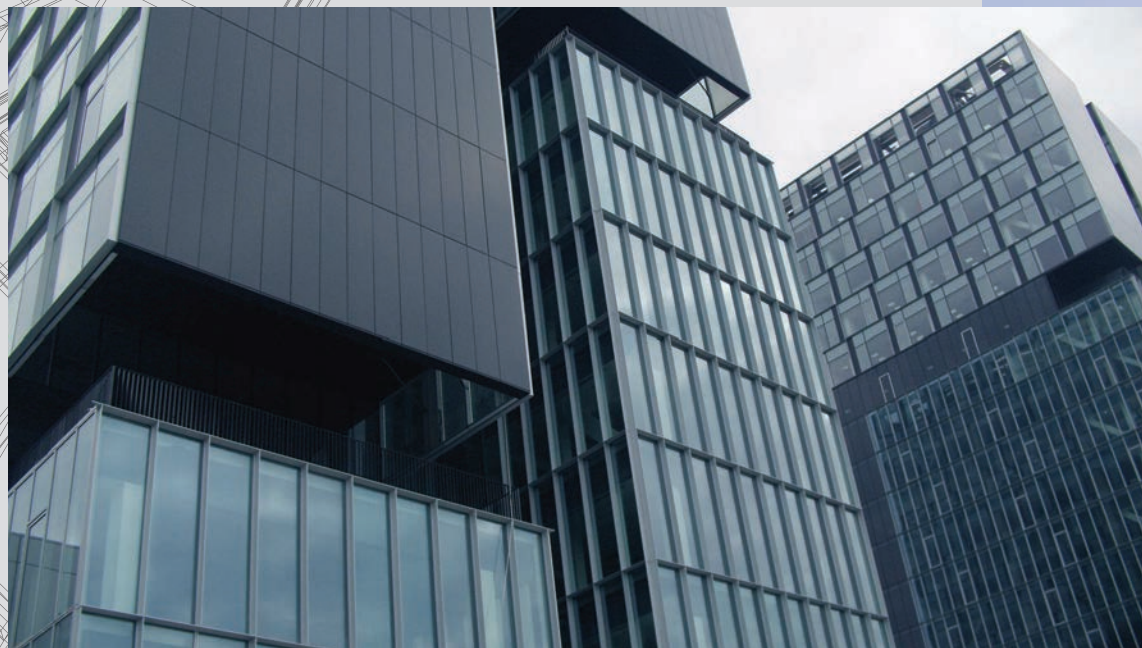
**LOCATION** 44-46 Pandurilor Blvd., Târgu Mureș  
**SURFACE** 18,000 sqm  
**EXECUTION** 2014-2015  
**DURATION** 20 months





ARACO 2016 Quality Trophy

# CITY GATE



**LOCATION** 5 Presei Libere square, district 1, Bucharest  
**SURFACE** 93,500 sqm  
**EXECUTION** 2008-2009  
**DURATION** 19 months



**LEED Gold:** the first operating building in Bucharest that received it  
**ARACO 2010 Quality Trophy**  
**Europa Property SEE Awards:** CEE Real estate 2012

**CEE Real Estate:** The best office development in 2009  
**CEE Real Estate:** The best overall building of the year 2009

# TOWER CENTER INTERNATIONAL



**LOCATION** 15-17 Ion Mihalache blvd., district 1, Bucharest  
**SURFACE** 22,500 sqm  
**EXECUTION** 2006-2008  
**DURATION** 28 months



**BREEAM Excellent**

# CHARLES DE GAULLE



**LOCATION** 15 Charles de Gaulle square, district 1, Bucharest  
**SURFACE** 38,400 sqm  
**EXECUTION** 2002-2005  
**DURATION** 28 months



ARACO 2006 Quality Trophy

**This building was the first in Romania** where the top-down construction system was used, in 2003 (5 underground levels).

# WILLBROOK PLATINUM



**LOCATION** 172-178 București-Ploiești road, Bucharest  
**SURFACE** 65,000 sqm  
**EXECUTION** 2007-2011  
**DURATION** 44 months





**LEED Gold**  
**International Property Awards 2010**

**ARACO 2012 Quality Trophy**

# PORSCHE ROMANIA HQ



**LOCATION** 2 Pipera-Tunari road, Voluntari, Ilfov County  
**SURFACE** 4,300 sqm  
**EXECUTION** 2002-2003  
**DURATION** 19 months

ARACO 2003 Quality Trophy

# VICTORIA PARK



**LOCATION** 69-81 București-Ploiești road, district 1, Bucharest  
**SURFACE** 27,000 sqm  
**EXECUTION** 2006-2007  
**DURATION** 19 months

# CATHEDRAL PLAZA



**LOCATION** 11-13 Gen. Barthelor street, district 1, Bucharest  
**SURFACE** 24,000 sqm  
**EXECUTION** 2006-2010  
**DURATION** 58 months

*BOG'ART*

# BOG'ART CENTER



ARACO 2002 Quality Trophy

<b>LOCATION</b>	27 Ion Brezoianu street, district 1, Bucharest
<b>SURFACE</b>	3,750 sqm
<b>EXECUTION</b>	2000-2001
<b>DURATION</b>	12 months

# GARA HERĂSTRĂU



**LOCATION** 4b Gara Herăstrău, district 2, Bucharest  
**SURFACE** 16,800 sqm  
**EXECUTION** 2015-2016  
**DURATION** 19 months

**BREEAM Excellent**

# GREEN GATE



**BREEAM Very Good** (first office building in CEE to obtain it)  
**CEEQA and SEE Real Estate Awards**  
Office Development of the Year 2014

<b>LOCATION</b>	22 Tudor Vladimirescu Blvd., Bucharest
<b>SURFACE</b>	49,600 sqm
<b>EXECUTION</b>	2012-2014
<b>DURATION</b>	20 months

# FLOREASCA PARK



**LOCATION** 43 Pipera road, district 2, Bucharest  
**SURFACE** 68,000 sqm  
**EXECUTION** 2012-2013  
**DURATION** 15 months

**BREEAM Excellent** (first excellent certification awarded in Romania)  
Araco 2014 Quality Trophy



# AVIATORILOR 47



**LOCATION** 47 Aviatorilor blvd., district 1, Bucharest  
**SURFACE** 7,000 sqm  
**EXECUTION** 2011-2012  
**DURATION** 17 months

# ONGOING WORKS





# MIRO



**LOCATION** 89A București-Ploiești road, Bucharest  
**SURFACE** 35,900 sqm  
**EXECUTION** 2020-2021  
**DURATION** 16 months



# U CENTER



**LOCATION** 210 Calea Șerban Vodă, district 4, Bucharest  
**SURFACE** 49,000 sqm  
**EXECUTION** 2019-2021  
**DURATION** 18 months



J8



**LOCATION** 8 Jiului street, district 1, Bucharest  
**SURFACE** 79,000 sqm  
**EXECUTION** 2020-2021  
**DURATION** 18 months





# GLOBALWORTH SQUARE

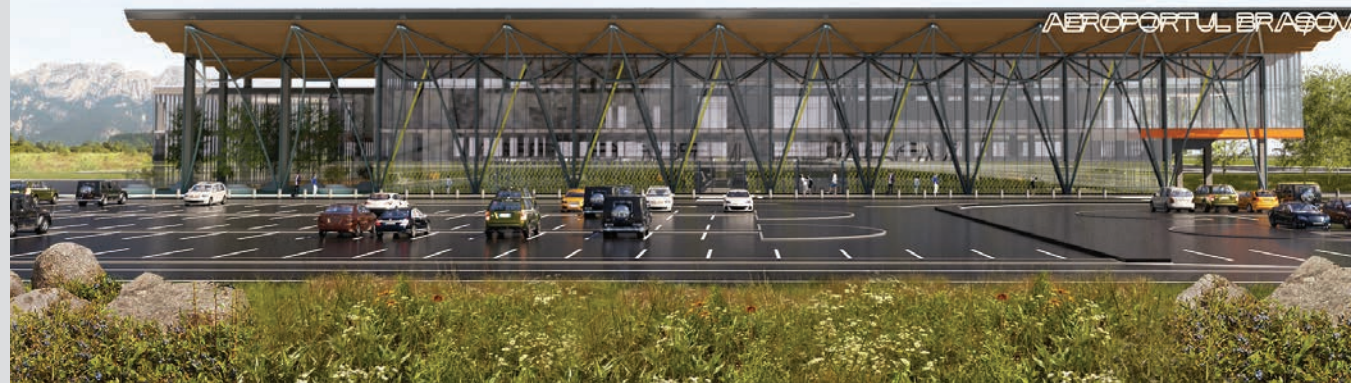


**LOCATION** 201 Barbu Văcărescu street, district 2, Bucharest  
**SURFACE** 46,200 sqm  
**EXECUTION** 2019-2020  
**DURATION** 19 months

# BRASOV INTERNATIONAL AIRPORT



**LOCATION** Ghimbav, Braşov County  
**SURFACE** 11,800 sqm  
**EXECUTION** 2019-2021  
**DURATION** 12 months



# BĂNEASA AIRPORT



**LOCATION** 30 București-Ploiești street, district 1, Bucharest  
**SURFACE** 4,300 sqm  
**EXECUTION** 2020-2021  
**DURATION** 15 months

# ART CITY



**LOCATION** 8 Petroliştilor blvd., district 1, Bucharest  
**SURFACE** 19,600 sqm  
**EXECUTION** 2020-2022  
**DURATION** 16 months



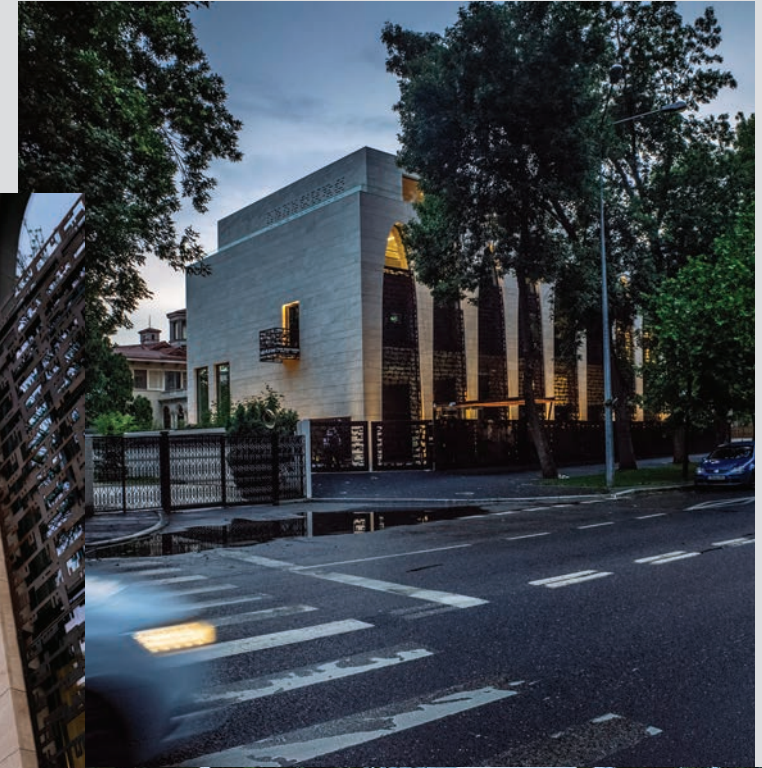
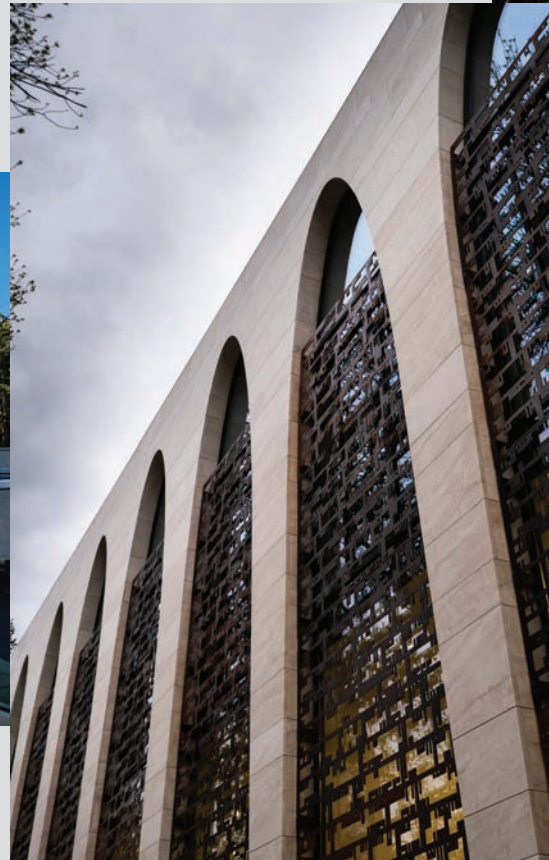
# INSTITUTIONAL & INFRASTRUCTURE







# THE EMBASSY OF THE STATE OF KUWAIT IN BUCHAREST



**LOCATION** 52 Primăverii blvd., district 1, Bucharest  
**SURFACE** 4,000 sqm  
**EXECUTION** 2017-2019  
**DURATION** 18 months



# EMBASSY OF THE UNITED STATES IN ROMANIA



**LOCATION** 4-6 Dr. Liviu Librescu blvd., district 1, Bucharest  
**SURFACE** 10,000 sqm  
**EXECUTION** 2009-2011  
**DURATION** 29 months





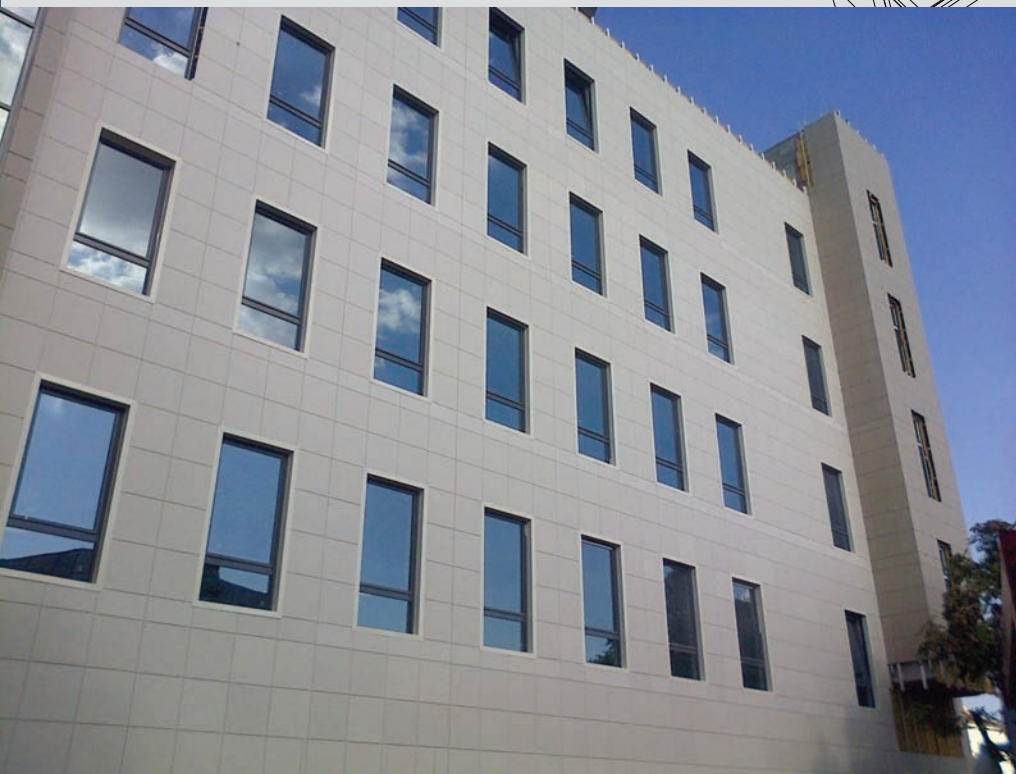
# EMBASSY OF CANADA TO ROMANIA



**LOCATION** 1-3 Tuberozelor street, district 1, Bucharest  
**SURFACE** 3,900 sqm  
**EXECUTION** 2004-2005  
**DURATION** 8 months

*BOGART*

# DOLJ COURTHOUSE



**LOCATION** 12 Brestei street, Craiova, Dolj County  
**SURFACE** 8,952 sqm  
**EXECUTION** 2014-2016  
**DURATION** 23 months

# GOVERNMENT PROTECTION AND GUARD SERVICE (SPP) HQ



**LOCATION** 42B Geniului Blvd., district 6, Bucharest  
**SURFACE** 45,600 sqm  
**EXECUTION** 2011-2013  
**DURATION** 24 months





# HENRI COANDĂ INTERNATIONAL AIRPORT



**LOCATION** 224E Calea Bucureștilor, Otopeni  
**SURFACE** 26,000 sqm  
**EXECUTION** 2009-2010  
**DURATION** 16 months



# SUBWAY STATIONS M4



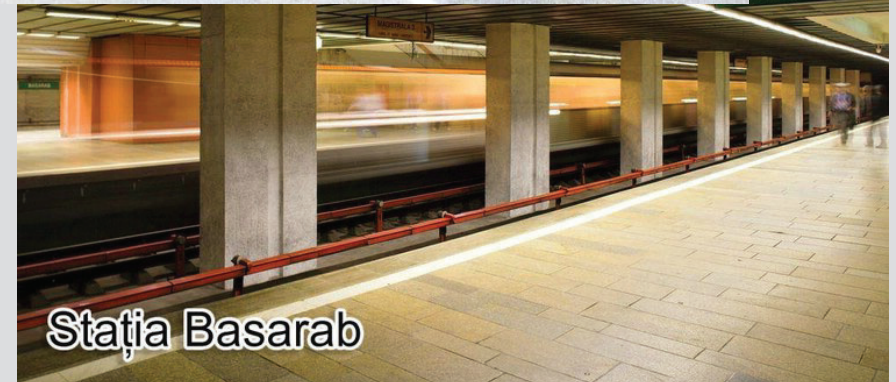
Stația Basarab



Stația Gara de Nord 2



Stația Grivița



Stația Basarab

**LOCATION** Bucharest  
**SURFACE** 7 km  
**EXECUTION** 1998-1999  
**DURATION** 12 months

# MEMORIAL OF REBIRTH



**LOCATION**      Revoluției Square, Bucharest  
**SURFACE**      25m  
**EXECUTION**    2005-2006  
**DURATION**      12 months

# INDUSTRIAL & RETAIL WAREHOUSES





# IKEA PALLADY



**LOCATION** 57 Theodor Pallady Blvd., district 3, Bucharest  
**SURFACE** 67,000 sqm  
**EXECUTION** 2017-2018  
**DURATION** 13 months



# LIDL LOGISTIC CENTER LUGOJ



ARACO 2017 Quality Trophy

<b>LOCATION</b>	Calea Timișoarei, Lugoj, Timiș County
<b>SURFACE</b>	46,932 sqm
<b>EXECUTION</b>	2015-2016
<b>DURATION</b>	13 months



# EMERSON PRODUCTION HALL



**LOCATION** 24 Borşului street, Oradea  
**SURFACE** 14,400 sqm  
**EXECUTION** 2013-2014  
**DURATION** 11 months

# STENTOR PRODUCTION HALL



**LOCATION** 31 Olteniței road, Curcani, Oltenița County  
**SURFACE** 5,526 sqm  
**EXECUTION** 2013-2014  
**DURATION** 6 months

*BOG'ART*

# BOG'ART STEEL



**LOCATION** 55 Nicolae Teclu street, district 3, Bucharest  
**SURFACE** 11,400 sqm  
**EXECUTION** 2007-2009  
**DURATION** 24 months

# BUCHAREST PUBLIC TRANSPORT AUTHORITY (RATB)



<b>LOCATION</b>	Bucharest
<b>SURFACE</b>	12,800 sqm
<b>EXECUTION</b>	1998-2000
<b>DURATION</b>	24 months

# SHOPPING CENTERS





  
baneasa  
shopping  
city

MARKS  
SPENCER

# SUN PLAZA



**LOCATION** 391 Calea Văcărești, district 4, Bucharest  
**SURFACE** 25,000 sqm  
**EXECUTION** 2016-2018  
**DURATION** 24 months



# VERANDA MALL



**LOCATION** 23 Ziduri Moși street, district 2, Bucharest  
**SURFACE** 66,650 sqm  
**EXECUTION** 2015-2016  
**DURATION** 14 months



# MEGA MALL



**LOCATION** 3-5 Pierre de Coubertin blvd., district 2, Bucharest  
**SURFACE** 220,000 sqm  
**EXECUTION** 2014-2015  
**DURATION** 12 months

**CEEQA** Building of the year in 2015  
**ARACO** 2015 Quality Trophy  
Through this project Bog'Art introduced in Romania the **Splice Sleeves NMB** system for precast structures

# ORADEA SHOPPING CITY



<b>LOCATION</b>	87 Aradului street, Oradea County
<b>SURFACE</b>	22,500 sqm
<b>EXECUTION</b>	2010-2011
<b>DURATION</b>	10 months

# CORESI SHOPPING RESORT



**LOCATION** 5 Turnului street, Braşov  
**SURFACE** 51,000 sqm  
**EXECUTION** 2013-2015  
**DURATION** 19 months



**BREEAM Excellent**

BOGART

# EURO MALL PITEȘTI



**LOCATION** 26 Calea București, Pitești, Argeș County  
**SURFACE** 16,900 sqm  
**EXECUTION** 2005-2007  
**DURATION** 18 months

ARACO 2008 Quality Trophy

# GRAND CINEMA DIGIplex BĂNEASA



**LOCATION** 42D București-Ploiești road, district 1, Bucharest  
**SURFACE** 12,970 sqm  
**EXECUTION** 2010-2011  
**DURATION** 13 months

# BĂNEASA SHOPPING CITY



**LOCATION** 42D București-Ploiești road, district 1, Bucharest  
**SURFACE** 110,000 sqm  
**EXECUTION** 2007-2008  
**DURATION** 9 months



ARACO 2009 Quality Trophy



# RESIDENTIAL





# BELVEDERE RESIDENCES

(2 PHASES)



**LOCATION** 6-8 Fabrica de Glucoză street, district 2, Bucharest  
**SURFACE** 75,500 sqm  
**EXECUTION** 2016-2019  
**DURATION** 37 months



# CIŞMIGIU HOUSE



**LOCATION** 8 Ostaşilor street, district 1, Bucharest  
**SURFACE** 6,500 sqm  
**EXECUTION** 2015-2016  
**DURATION** 13 months

Modern living spaces, located in the center of Bucharest

# MORA RESIDENCE



**LOCATION** 17bis Grigore Mora street, district 1, Bucharest  
**SURFACE** 3,000 sqm  
**EXECUTION** 2014-2015  
**DURATION** 14 months

# EVOCASA OPTIMA



**LOCATION** 54-56 Fetești alley, Bucharest  
**SURFACE** 11,500 sqm  
**EXECUTION** 2012-2013  
**DURATION** 11 months

BOÇART

# EVOCASA EDENIA



**LOCATION** 5-7 Codrii Neamțului street, district 3, Bucharest  
**SURFACE** 6,800 sqm  
**EXECUTION** 2012-2013  
**DURATION** 13 months



# MARIA ROSETTI 38



**LOCATION** 38 Maria Rosetti street, district 2, Bucharest  
**SURFACE** 5,000 sqm  
**EXECUTION** 2012-2013  
**DURATION** 16 months

BOGART

# DANTE ALIGHERI



**LOCATION** 6-10 Dante Aligheri street, district 1, Bucharest  
**SURFACE** 3,865 sqm  
**EXECUTION** 2009-2011  
**DURATION** 23 months

# OXFORD GARDENS



**LOCATION** 141 Pipera blvd., Voluntari  
**SURFACE** 18,110 sqm  
**EXECUTION** 2007-2009  
**DURATION** 24 months

More than 200 villas

*BOGART*

# DOAMNA GHICA PLAZA



More than 600 apartments and retail spaces

<b>LOCATION</b>	19 Ziduri între Vii, district 2, Bucharest
<b>SURFACE</b>	97,640 sqm
<b>EXECUTION</b>	2007-2009
<b>DURATION</b>	28 months





*BOG'ART*

**BOG'ART CENTER HQ**

27 Ion Brezoianu street, district 1, Bucharest, Romania

+(40) 3104552

[office@bogart.ro](mailto:office@bogart.ro)



[www.bogart.ro](http://www.bogart.ro)